

i-Measure (measuring camera)

VGA high-definition measuring Digital camera

2.0 M pixel

Direct to LCD screen



Leading Innovation>>>

*Experiencing on screen measurement
Just a few mouse clicks, no computer require*

c-mount VGA camera

Camera YOU NEED for Measurement

Model: i-measure



i-measure VGA camera

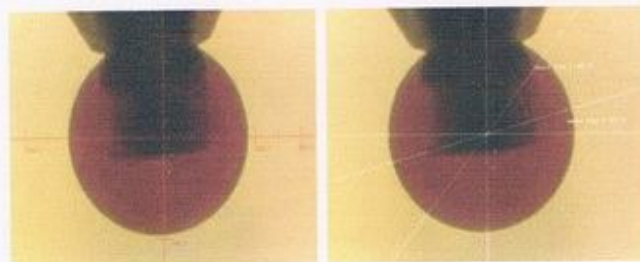
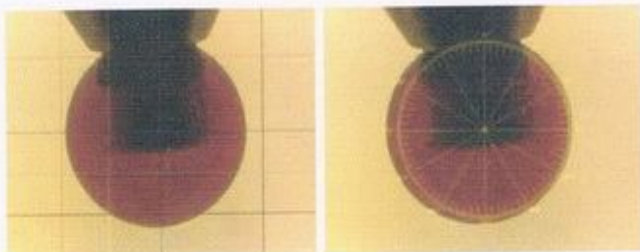
Package contents:

- i-Measure VGA camera
- 100-240V power supply adaptor
- Calibration scale
- PS2 mouse

System requirements:

- VGA cable & Monitor
- USB disk

On screen measurement camera



FC CE

Features:

- 1/3" Color CMOS
- Resolution 1600x1200
- Monitor resolution and frame rate
 - 1600x1200: 23 fps
 - 1680x1050: 26.5fps
 - 1440x900 : 28 fps
 - 1366x768 : 29 fps
 - 1280x1024: 25 fps
 - 1024x768 : 23 fps
 - 800x600 : 23 fps
- Scan Method : Progressive scanning
- Exposure control : Auto / Manual
- White Balance : Auto / Manual
- Color : Color, B/W, Sepia, Negative
- Monitor interface : VGA
- Storage : support USB disk 256M-32G
- PS/2 Mouse control
- Power 5V DC 100-240V power supply

Performance capabilities:

- Support Flip & Freeze image, 1/2 freeze image for comparison
- Support to create Line&Mark generator
 - 12 groups movable cross hair, horizontal line, vertical line
 - create 3 groups of movable circle mark&size
 - 360° circle scale
 - 2 adjustable angle lines
 - movable screen ruler & scale adjustable
 - arrow mark
- Measurement
 - Calibration support and 5 groups memorized
 - Linear distance,
 - Circle diameter, circumference and area
 - Rectangular length, width, perimeter and area
 - Polygon's perimeter and area
 - Circle Center distance
 - Ellipse's perimeter and area
 - Arc's radian and length
 - Angle

www.opticascope.com